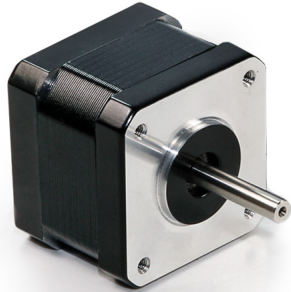
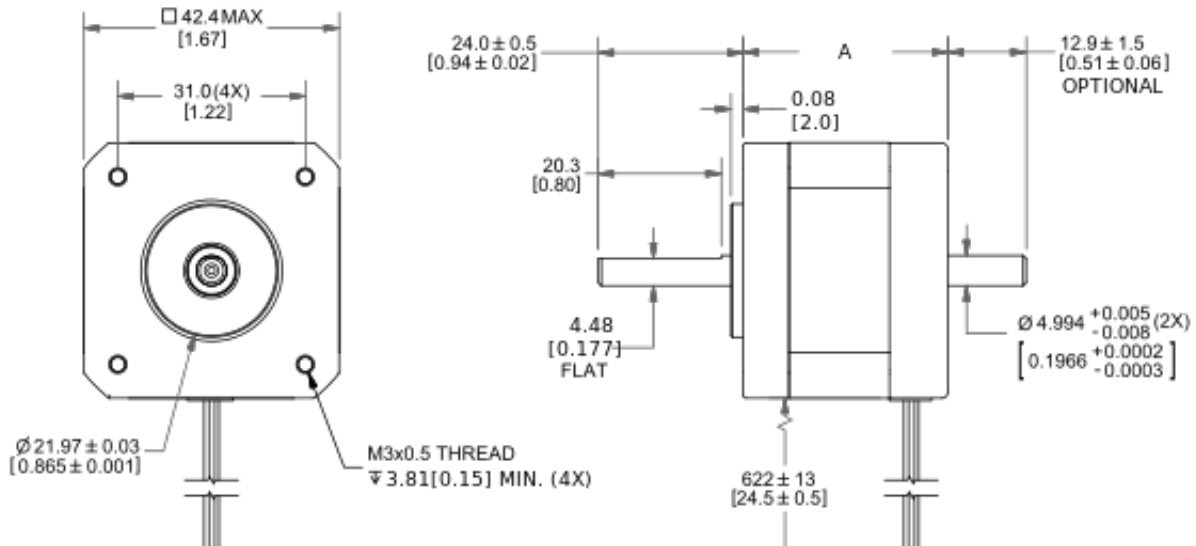


MOTOR SPECIFICATIONS



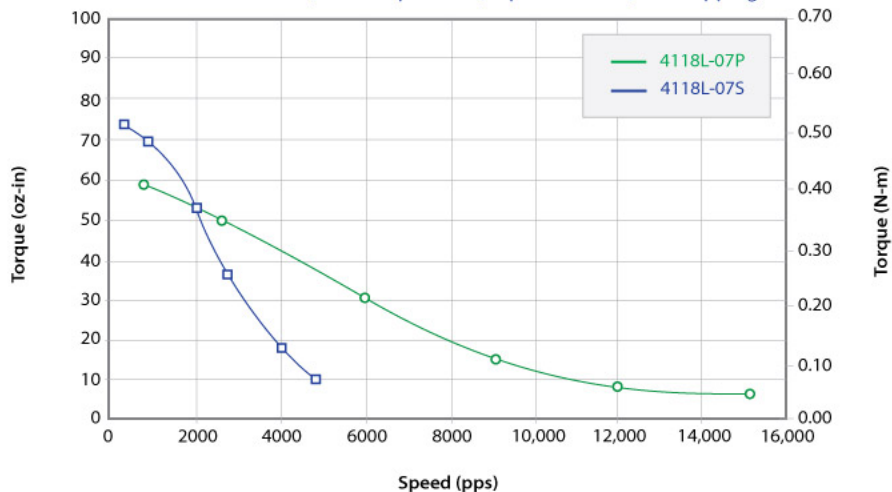
| | |
|----------------------|-------------------------|
| Part Number | WO-4118L-07P |
| Step Angle | 1.8° |
| Frame Size | NEMA 17 |
| Body Length (Dim. A) | 1.89 in (48 mm) |
| Current | 2.1 Amps/Phase |
| Holding Torque | 83 oz-in (0.59 Nm) |
| Resistance | 1.3 Ohms/Phase |
| Rotor Inertia | 0.37 oz-in ² |
| Number of Leads | 6 |
| Connection | Parallel |
| Weight | 0.7 lbs (0.32 kg) |

DIMENSIONS



PERFORMANCE CURVE

4118L-07S 24VDC, 1.05 Amps/Phase, Bipolar Series, 1/2 Stepping
 4118L-07P 24VDC, 2.10 Amps/Phase, Bipolar Parallel, 1/2 Stepping



OPERATING SPECIFICATIONS

| | |
|--------------------------------------------|-----------------------------|
| Radial Play | 0.001" max @ 1 lbs load |
| End Play | 0.003" max @ 2 lbs load |
| Shaft Run Out | 0.002" TIR |
| Concentricity of Mounting Pilot to Shaft | 0.003" TIR |
| Perpendicularity of Shaft to Mounting Face | 0.003" TIR |
| Max Axial Load | 6 lbs |
| Maximum Case Temperature | 80 C |
| Ambient Temperature | -20° to 50° C |
| Storage Temperature | -20° to 100° C |
| Humidity Range | 85% or less, non-condensing |
| Magnet Wire Insulation | Class B 130° C |
| Insulation Resistance | 100MΩ at 500 VDC |
| Dielectric Strength | 500 VAC for 1 minute |

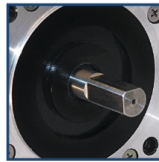
WIRING TABLE

| COLOR | FUNCTION |
|-------|-----------|
| Red | A+ Phase |
| Blue | A- Phase |
| Green | B + Phase |
| Black | B- Phase |

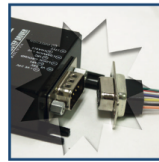
OPERATION & USAGE TIPS



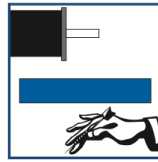
Do not disassemble motors; a significant reduction in motor performance will occur.



Do not machine shafts; this will have a negative effect on shaft run out and perpendicularity.



Do not disconnect motor from drive while in operation.



Do not use holding torque/detent torque of motor as a fail safe brake.



Do not hold motor by lead wires.



Do not exceed the rated current; this will burn the motor.

FAILURE TO COMPLY WITH THESE RECOMMENDATIONS WILL VOID ALL WARRANTY TERMS

RECOMMENDED



Microstepping Driver
R701P-RO



Single Axis Controller+Driver
R356

Motion Control, **Solved.**

MOTOR ENGINEERING & MANUFACTURING



Optimized
For Your
Application



Quick
Prototype
Turnaround



Small Batch
to OEM Volume
Production



US Based
Support &
Manufacturing